



## **Polaris RZR Suspension Seats**

Install Instructions for RZR 570, 800, 900, S900, XP 1000, Trail, Turbo, Turbo S, RS1



**Read through all of the instructions completely before beginning the install.**

### **Parts Included:**

- 1 x PRP Seats Suspension Seat for XP 1000 or 900
- 2 x Steel support tubes (shipped on the under side of the seat)
- 4 x Small screws, nuts and washers to attach pull strap
- 1 x Pull strap to release seat

### **Hardware Included with Stock seat:**

- 8 x Screws
- 4 x Washers
- 4 x Locking washers
- 4 x spacers

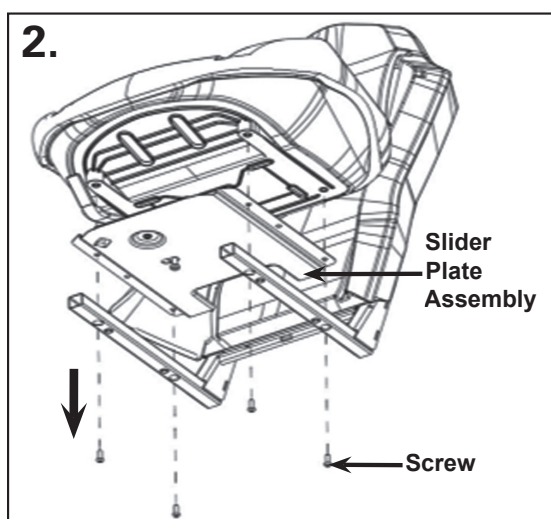
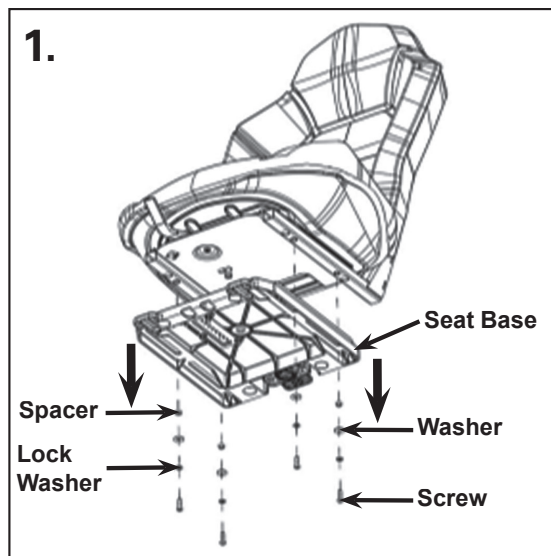
### **Tools required:**

- Phillips head screwdriver
- T-27 Torx (Included with vehicle tool kit, magnetic recommended)
- 5/16 open end wrench

**Remove all parts from the box and unwrap completely using the packaging to lay out the pieces.**

### **Time:**

Approx 15 minutes.



## **Front Seats with Adjustable Sliders** **RZR XP 1000, Turbo, Turbo S, RS1**

### **1. Remove stock seat base**

Using a T-27 torx bit, remove plastic seat base by removing four screws, four spacers and relevant washers.

**IMPORTANT:** Retain hardware for reinstallation.

### **2. Remove stock seat slider**

Using a T-27 torx bit, remove the seat slider plate assembly from the stock seat by removing the 4 screws. Discard stock seat back and bottom cushion.

**IMPORTANT:** Retain hardware for reinstallation.

### **3. Install Seat Slider on PRP Seat**

Place the stock slider on the bottom of your new PRP Seat. Using the hardware removed in step two, secure the slider and the square support tubes provided to the base of the seat, ensuring the longer end of the square tubes is facing towards the front of the seat.

**NOTE:** A magnetic driver is recommended.





#### 4. Install Seat Base

Position seat base and lock in the slider mechanism. Using ALL the hardware removed in step 1 (Screws, washers, lock washers, spacers), reinstall the stock seat base.

**IMPORTANT:** You must re-use the spacers. Without the spacers, the seat will not slide properly.

**IMPORTANT:** Only tighten the bolts by hand. Over-tightening may cause the threads in the square tubes to break loose.

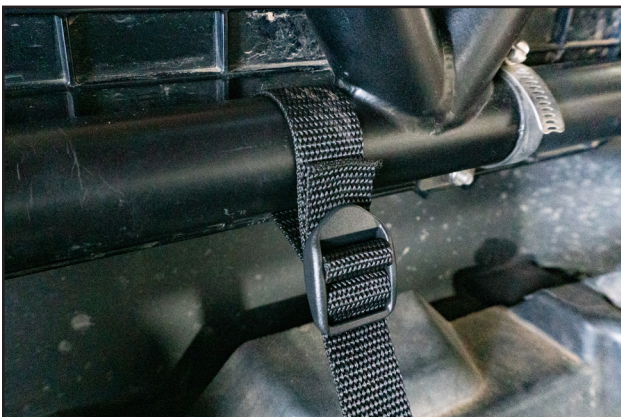


#### 5. Attach pull strap

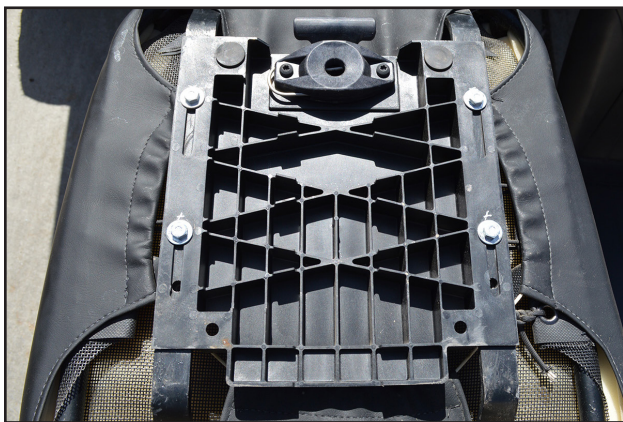
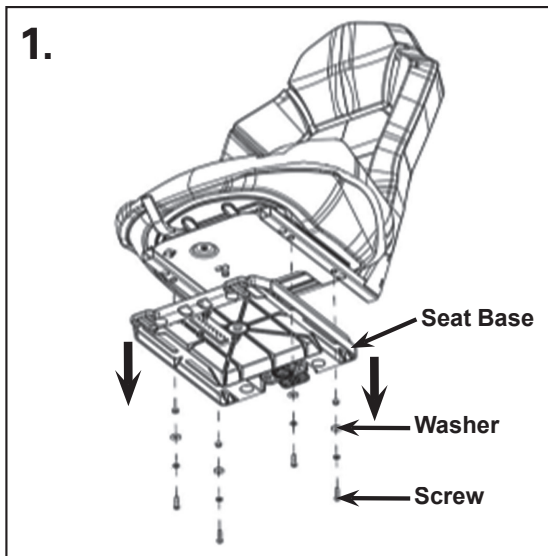
Using the hardware in a RED BAG, a phillips screwdriver, and a 5/16 wrench, attach the pull strap on the back of the seat to the under side of the latch on the stock seat base.

Once the seat is clicked back in, wrap the top of the pull strap around the harness bar and secure it into the plastic buckle.

This pull strap will allow you to release the seat base easily when you want to remove the seat.







## **Rear Seats & RZR 570, 800, 900**

\*These older seats and rear seat/benches do not have a slider in the seat base. Therefore the plastic seat base is directly attached to the PRP seat frame.

### **1. Remove stock seat base**

Using a T-27 torx bit, remove plastic seat base by removing four screws, and relevant washers.

**IMPORTANT:** Retain hardware for reinstallation.

### **2. Re-Install the base onto the PRP Seat**

Place the seat base directly onto the bottom of the PRP Seat's frame. Re-install it to the PRP Seat frame using the four OEM screws, spacers, and washers with a T27 torx bit.

### **3. Attach pull strap**

Using the hardware in a RED BAG, a phillips screwdriver, and a 5/16 wrench, attach the pull strap on the back of the seat to the under side of the latch on the stock seat base.

Once the seat is clicked back in, wrap the top of the pull strap around the harness bar and secure it into the plastic buckle.

This pull strap will allow you to release the seat base easily when you want to remove the seat.

### **3. Aaaaaand, your done!**

Congratulations! Your new PRP Seats is installed and ready to use.

If you have any questions or experience issues, please contact your retail outlet first for help. However, the staff at PRP is always happy to help at **1-800-317-6253**.

**Thank you! Ride Safe!**