

Install Instructions

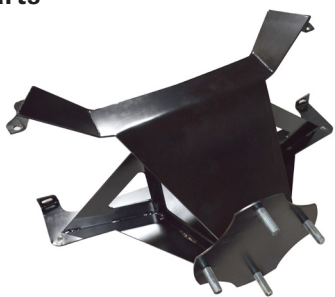
PRP Seats

XP 1000 Spare Tire Mount



Parts

A.



B.



C.



D.



Read through all of the instructions completely before beginning the install.

Parts Included:

- A. 1 PRP XP 1000 Spare tire mount
- B. 2 Upper Arms
- C. 2 Curved Lower Arms
- D. 2 1/4" x 3/4" x 20 Bolts
2 7/16" Nylock Nuts
4 Washers

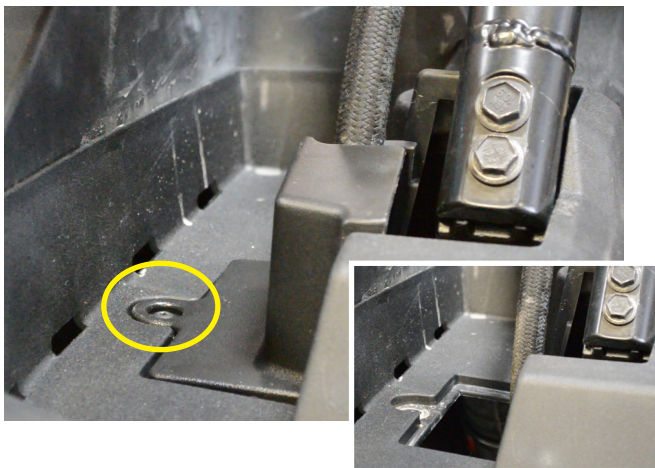
Remove all parts from the box and unwrap completely using the packaging to lay out the pieces.

Tools Needed: (not included)

- 15mm Open end wrench and Socket
- 10mm Open end wrench or socket
- T40 Torx bit
- T25 Torx bit
- Driver or Socket adapter for Torx bits
- 7/16" wrench and/or socket (x2)

Time:

Approx 20–30 minutes.



1. Remove the side covers

Using your T25 Torx, remove the screw holding on the covers next to the rear mounting point of the stock cage.

This will allow for easier access to the lower cage bolt you will remove.

Set cover and hardware aside.



2. Remove upper rear cage bolt

Using the 15mm wrench, remove ONLY the upper rear cage bolt. Set the bolt and nut aside to reinstall later.



3. Remove stock bolts

Using your T40 Torx, remove the two bolts above each rear tail light as well as the single bolt below each tail light. Set aside the bolts for reinstall later.



4. Place Spare tire mount

Start by holding the mount at an upward angle, placing the top holes over the spot from which you removed the stock bolts. Next, pivot down so the lower holes slide into the spot where the single bolts were removed.





5. Place upper support rod

Paying close attention to the angle of the tabbed ends, place the upper support rods (longer pieces) and reinstall the upper cage bolt you removed previously.



6. Replace Torx mounting bolts

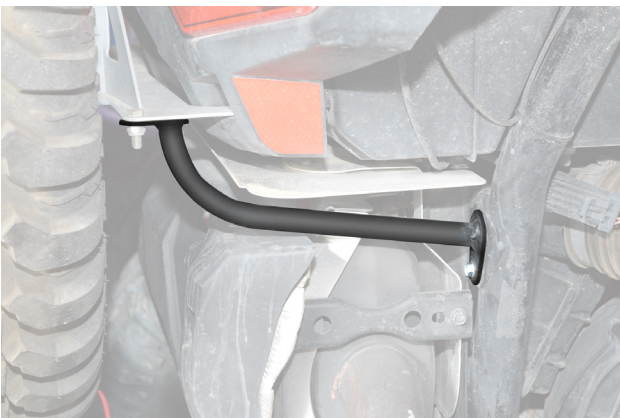
Now replace the 4 stock T40 mounting bolts on the top of the spare tire mount.



7. Remove bolt from rear down tube

With the 10mm wrench, remove the bolt from the rear down tube behind the muffler.

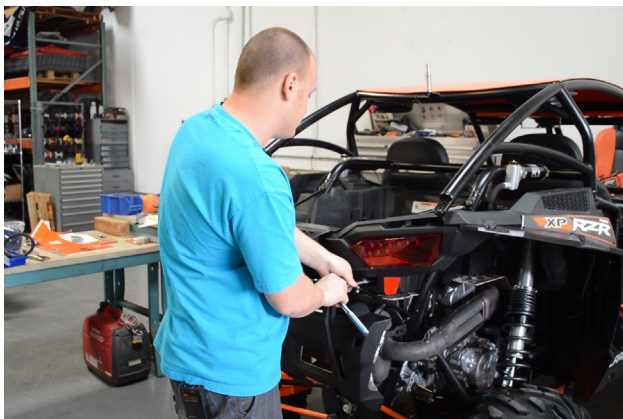
IMPORTANT: Do not remove this bolt until you have complete the above steps. This will ensure the parts of the car remain in place while you are working.



8. Place lower support rod

Install the curved lower support rod and reinstall the 10mm bolt you removed in the previous step.

Using included 1/4" bolt, nuts and washers; secure the upper tab to the spare tire mount and tighten.

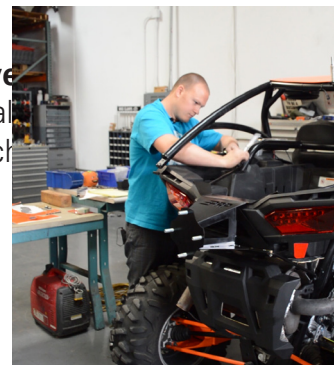


9. Tighten all bolts and screws.



10. Replace covers remove

Once everything is installed, replace the covers and screws which was the first step.



11. Aaaaaand, your done!

Congratulations! Your new PRP Seats XP 1000 Spare Tire Mount is installed and ready to use.

If you have any questions or experience issues, please contact your retail outlet first for help. However, the staff at PRP is always happy to help at **1-800-317-6253**.

Thank you! Ride Safe!