

Rear Bench Cover for 2016+ Toyota Tacoma

Install Instructions



Parts

A.



B.



C.



Read through all of the instructions completely before beginning the install.

Parts Included:

- A. 3 Head Rest Covers (Driver, Passenger, Center)
- B. 2 Seat Base Covers (60 Side and 40 Side)
- C. 2 Seat Back Covers (60 Side and 40 Side)

Tools Required:

Pliers

Remove all parts from the box and unwrap completely.

Time:

Approx 2 hours.



1. Place the covers out in the sun. This will allow the material to warm up and get rid of most creases formed from being in the box. This also makes it easier to fit the covers over the seat.



2. Start by removing the headrest from the seats. Push in both release buttons and lift the headrest up and out.

Bottom Cover Install

Make sure you have the correct cover for the driver or passenger side (40 side or 60 side section).

3. Install Bottom Cover - 40 Side

Place the cover over and pull it around the seat. Start at the front (near the brackets) and then work towards the back. Pull tight on all sides so that the cover doesn't have any wrinkles or creases.



Once the cover is seated correctly, pull the draw string super tight, and then tie it off so the cover is secure. Then cut off any excess string.

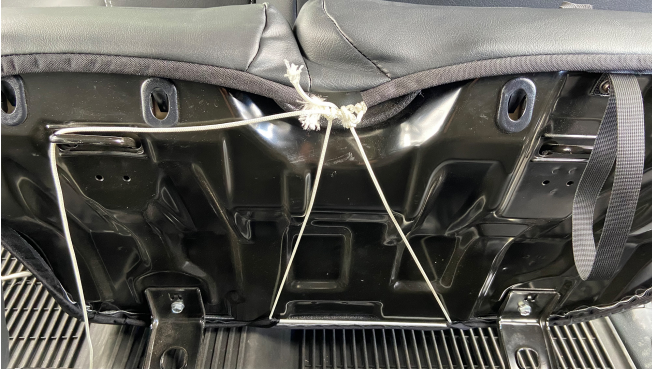
HINT - Use pliers to pull the draw string. It allows you to pull it a lot tighter, and saves you from straining your fingers.





4. Install Bottom Cover - 60 Side

Place the cover over and pull it around the seat. Start at the front (near the brackets) and then work towards the back. Pull tight on all sides so that the cover doesn't have any wrinkles or creases.



Feed the end of the string through the loop, and pull it extra tight (use pliers), then tie it off.

After you have finished that knot, take the end of the string and feed it through both nylon loops at the bottom of the cover, and then back up to where you started (creating a triangle). Pull the string tight, then tie it off with another knot. Doing this pulls the center of cover together, and creates a tight fit.



Cut away any excess string. Feed the pull strap through the elastic loop in the cover, then place the seat back down.



Top Cover Install

Make sure you have the correct cover for the driver or passenger side (40 side or 60 side section).

Slide the cover over the top of the seat. Pull the cover down so it is mostly in place. Take the flap on the front and push it through the center of the seat.



Make sure that the center seatbelt is fed through the gap at the top of the seat. Then close that zipper down the back of the seat, and tuck the excess zipper back underneath the cover to hide it.

*Make sure that the square hole on the back of the cover lines up with the seat latch underneath.



On the top, push the cover underneath the headrest slots. Start at one corner and push the material underneath the plastic cover. Then work your way around each side until the cover sits flush under the plastic.



On the back side, pull the bottom flap through the seat. Remove the felt protective strips, and then attach the Velcro strips to each other. Feel free to undo and adjust the Velcro as needed to get the cover tight.

HINT- use wide nose pliers to pull it extra tight.



... And You're All Done!

If you have any questions or experience issues, please contact your retail outlet first for help. However, the staff at PRP Seats is always happy to assist you.

1-800-317-6253.

customerservice@prpseats.com

Thank you! Ride safe!