

2025+ SEGWAY SUPERVILLAN

PRP SEAT MOUNT INSTRUCTIONS



HARDWARE (PER SEAT):

Seat Mounting Hardware

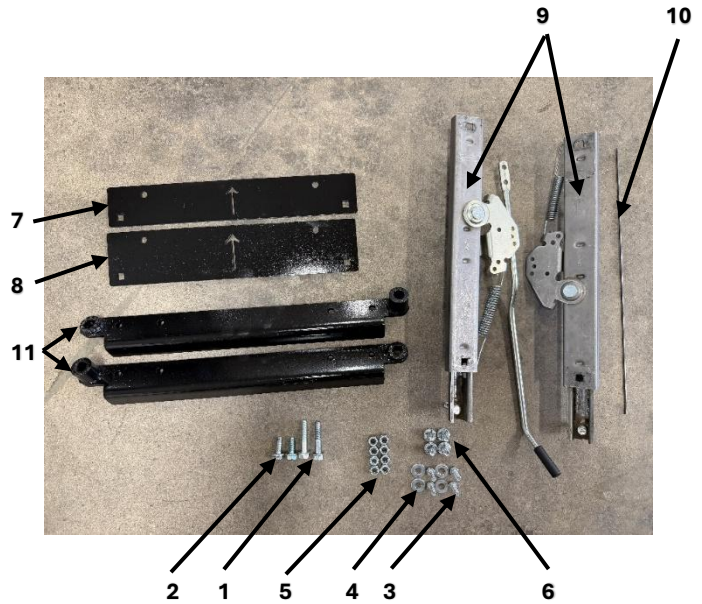
1. M8-1.25x40 partially threaded flange bolt (2X)
2. M8-1.25x25 threaded flange bolt (2X)

Slider Assembly Hardware

3. 1/4"-20x1" hex bolts (slider plate to seat flat straps) (4X)
4. 1/4" Washers (4X)
5. 5/16"-18 nuts (8X)
6. 5/16"-18 x 3/4" carriage bolts (4X)

Components

7. Rear slider mount plate (shorter) (1X)
8. Front slider mount plate (taller) (1X)
9. Slider assembly (1X)
10. Slider rod (1X)
11. Chassis mount plate (2X)



ASSEMBLY TOOLING:

1. 13mm wrench
2. 13mm socket
3. 6mm allen key
4. 7/16" wrench/socket
5. Needle nose pliers
6. Wire cutters
7. 1/2" wrench/socket



NOTES:

- PRP mounts/seats mount to the factory threads on the factory mount locations.

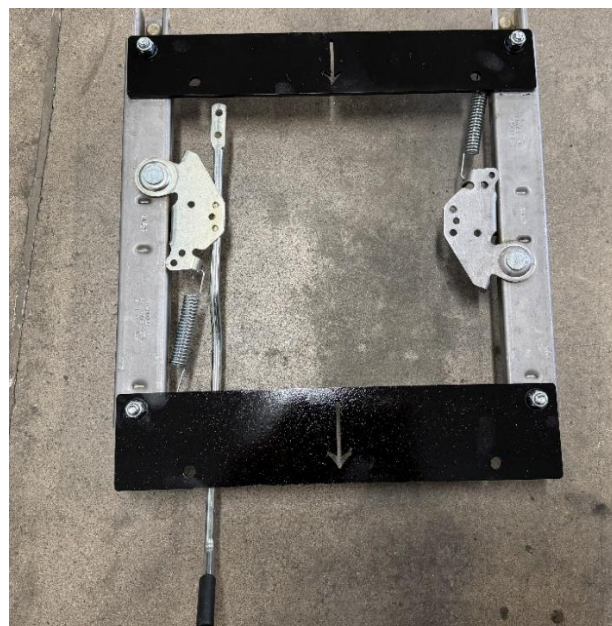
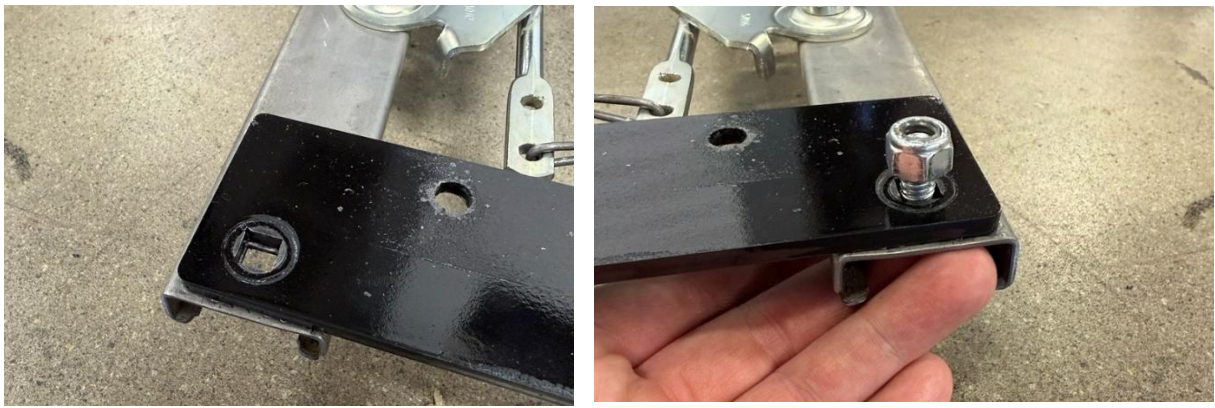
PREPARATION STEPS:

1. Pull factory seat out by pulling the quick release lever. From there, remove the four allen head bolts from the slider to remove the slider assembly.

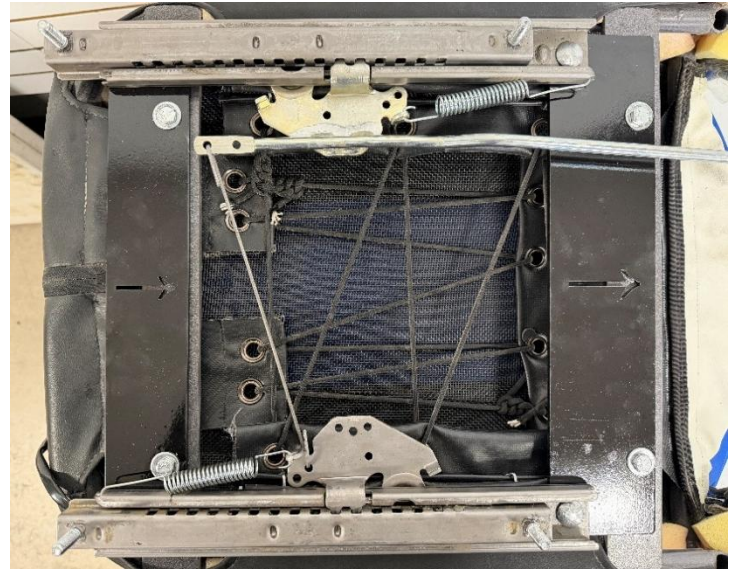
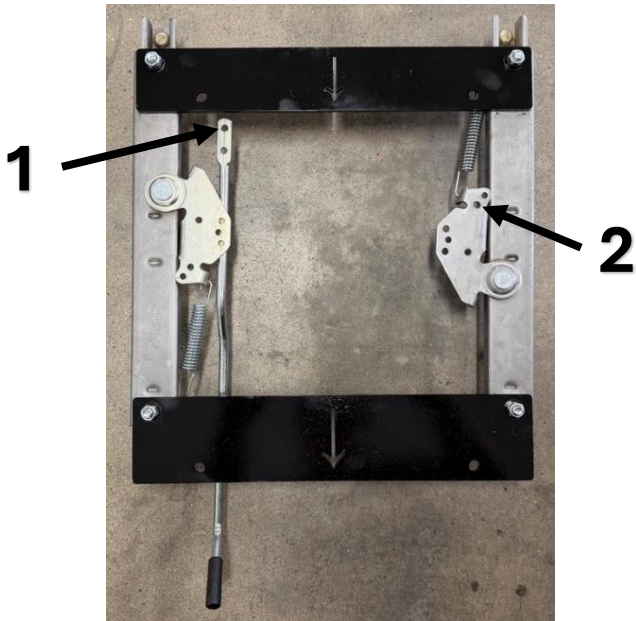
ASSEMBLY:

1. The handle signifies the front of the slider/seat. The handle will curve up in its right side up orientation. The shorter plate (~2 1/8") mounts to the **rear** side of the slider as mentioned in the components section. The longer taller plate (~2 7/8") mounts to the **front** side of the slider as mentioned in the component section.

Mount the front and rear mounting plates to the slider by driving the carriage bolt through the square holes on the slider from the bottom up and securing to the plate with the 5/16-18 nylock nuts using the 1/2" wrench/socket. Position the plates with the arrows pointing forward from the driver's perspective.

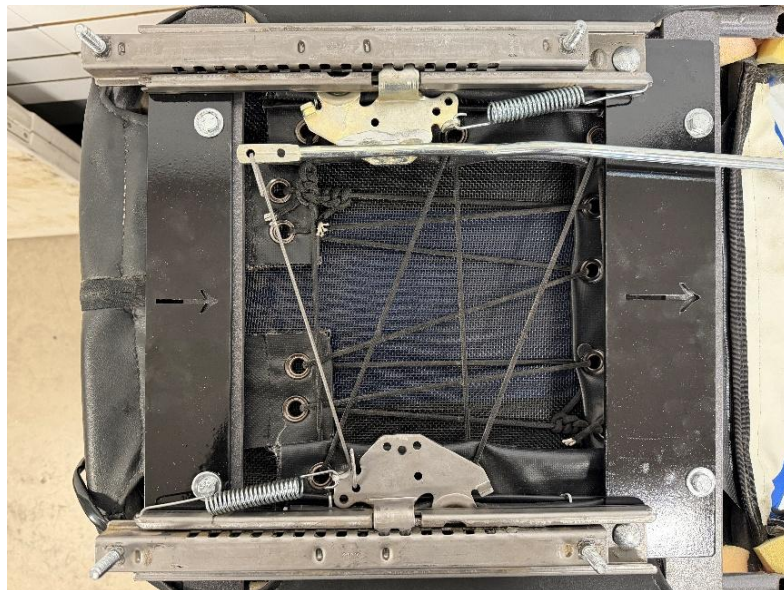


2. **COMPLETE THIS STEP WITH THE SLIDER OFF THE SEAT/NOT MOUNTED.** Using needle nose pliers, bend one end of the slider rod up to a 90-degree angle about 2" in from the end. Drive this end through the slider handle hole (1). Bend the other end to 90 degrees where the slider rod lands in relation to the spring side hole (2).
- a. **TIP:** the rod should fit tightly in the two holes to ensure that both sides of the slider actuate properly.

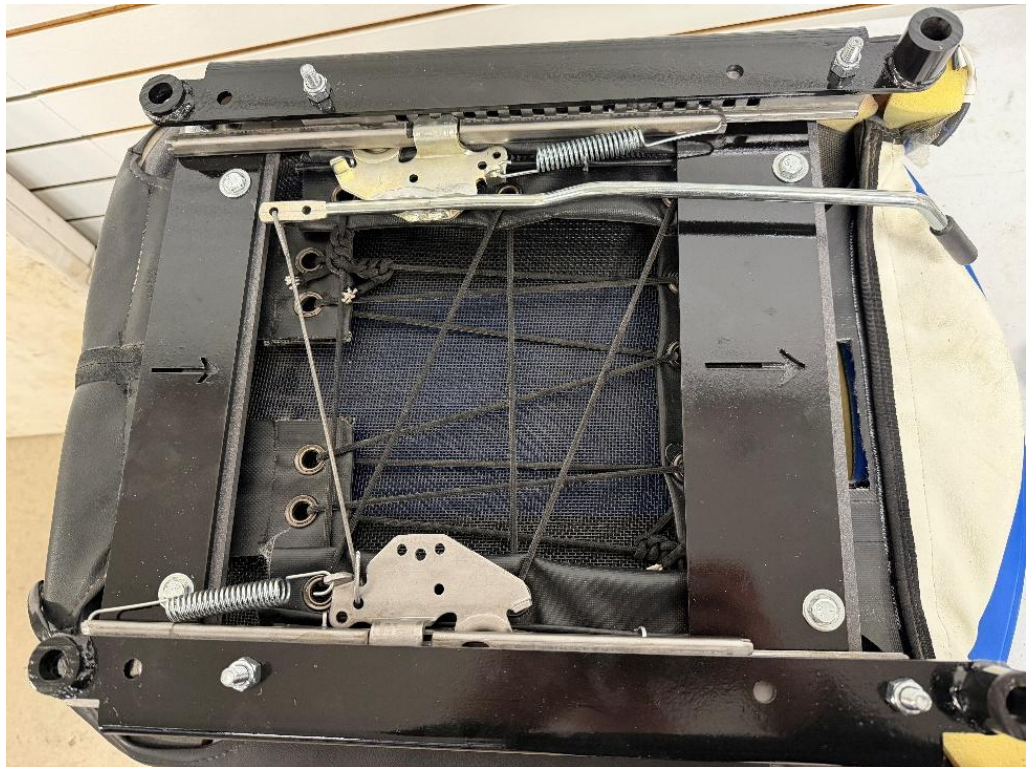
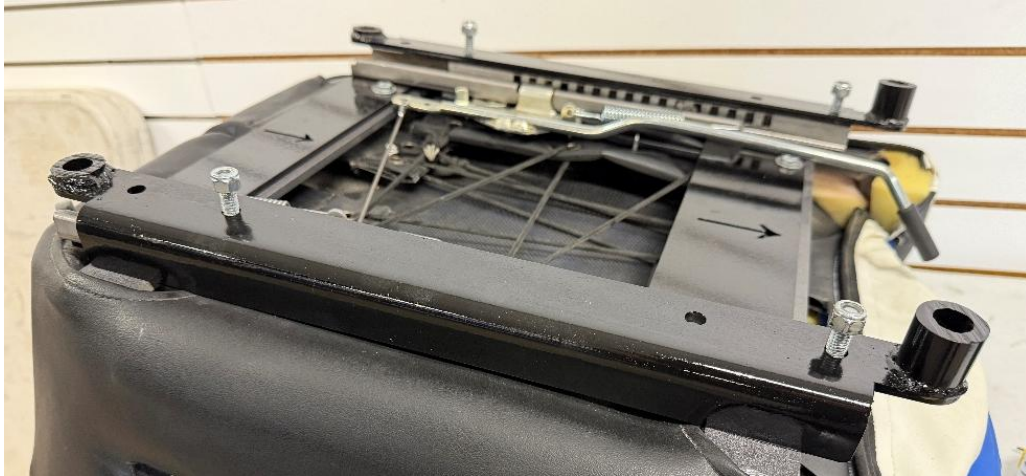


Once the slider rod is in place and the sliders actuate properly, bend the ends around as shown above, parallel to the cross section of the slider rod.

3. Mount the slider/plate assembly to the seat by lining up the standard 5/16" holes on the front/rear mount plates to the threaded holes on the bottom of the seat. Use the 1/4-20 hex bolts to secure the slider/plate assembly to the seat with the 7/16" socket.
 - a. The threaded slider studs will be oriented down when mounting the slider/plate assembly to the flat straps on the seat.
 - b. There is one of the back bolts that is somewhat covered by the slider spring. Pry the spring to the side as shown to fit a socket over the bolt to tighten.



4. Orient the chassis mounts with the taller spacer up front, and the shorter spacer in the rear with the flange on the outside of the slider and going up into the seat as shown in the first image. Mount the chassis mount plate to the slider assembly with the 5/16-8 nylock nuts and the 1/2" wrench/socket as shown in the second image.



5. Position the slider to the rear position and place the seat into the vehicle.



Drive the M8-1.25x40 partially threaded flange bolt into the front mounting locations with the 13mm wrench, securing the front end of the seat.



6. Slide the slider to its fully forward position and drive the factory M8-1.25x25 threaded flange bolt into rear mounting locations with the 13mm socket, securing the rear end of the seat.



7. Repeat all steps in the same order on the passenger side.
8. Be safe and enjoy your new PRP seats!

